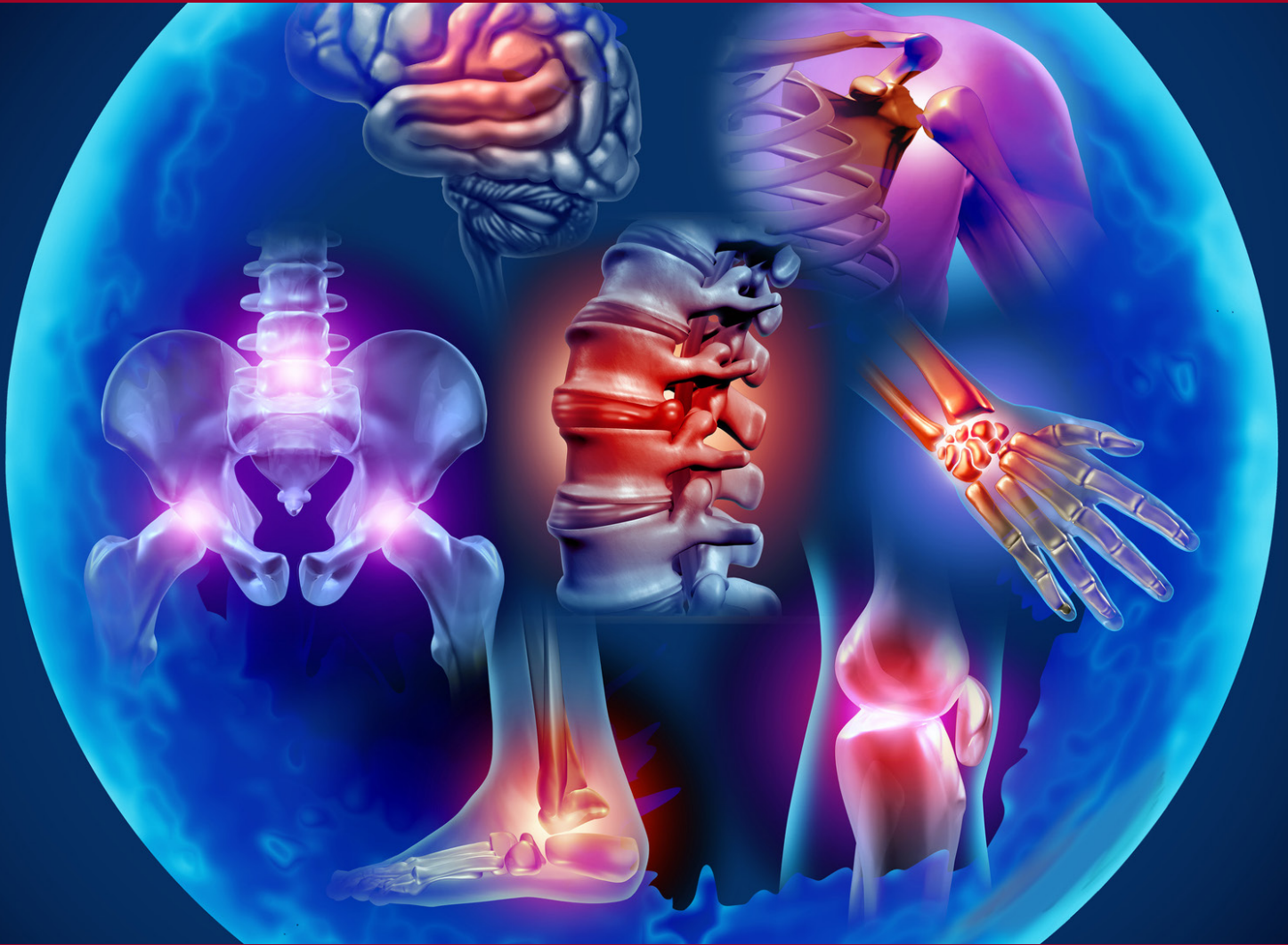


 CONTINUING MEDICAL EDUCATION

Cleveland Review of Rheumatic Diseases 2026



May 1-2, 2026

7:30 a.m. – 12 p.m.



Tinkham Veale University Center

11038 Bellflower Road, Cleveland, OH 44106

PRESENTED BY:



SPONSORED BY:



LEARNING OBJECTIVES

At the conclusion of this symposium, participants will be able to:

- **Describe** the mechanisms, clinical evidence, and safety considerations of emerging therapies for scleroderma, with a focus on novel chimeric antigen receptor (CAR) T-cell therapy, including its application in refractory systemic sclerosis, patient selection, efficacy in organ and skin involvement, and current limitations and future directions.
- **Summarize** recent updates in rheumatoid arthritis treatment, including biosimilars, new treatment modalities, new drug approvals, updated guidelines, and personalized medicine approaches.
- **Outline** current best practices for treating connective tissue disease-associated interstitial lung disease (CTD-ILD), including antifibrotics, immunosuppressants, and emerging targeted therapies.
- **Evaluate** emerging therapies in lupus and vasculitis, including new biologics, small molecules, and cell-based therapies, and their impact on disease control and patient outcomes.
- **Update** knowledge in axial spondyloarthritis, including new modalities and treatments that improve long-term outcomes and quality of life.
- **Describe** the utility of musculoskeletal ultrasound in rheumatology, including its role in diagnosis, disease monitoring, and guiding interventions in conditions such as Sjögren's syndrome, psoriatic arthritis, and rheumatoid arthritis.
- **Discuss** the potential utility of GLP-1 receptor agonists in autoimmune rheumatic diseases, focusing on mechanisms, metabolic and inflammatory effects, and emerging clinical data.
- **Recognize** strategies for managing difficult-to-treat rheumatic diseases, emphasizing refractory cases, the integration of novel therapies, and individualized patient-centered approaches.
- **Identify and manage** dermatologic and ophthalmologic manifestations of rheumatic diseases, understanding their diagnostic significance, systemic implications, and targeted treatment options.

WHO SHOULD ATTEND

This course content is intended for rheumatology specialists, internists, and family practice physicians. Nurses and other allied health professionals are also welcome to attend and will benefit from the course agenda.

ACCREDITATION

MOC Credit: Successful completion of this CME activity, which includes participation in the evaluation component, enables the participant to earn up to 11 MOC points and patient safety MOC credit in the American Board of Internal Medicine's (ABIM) Maintenance of Certification (MOC) program. It is the CME activity provider's responsibility to submit participant completion information to ACCME for the purpose of granting ABIM MOC credit.

AMA Credit:

Case Western Reserve University School of Medicine is accredited by the Accreditation Council for Continuing Medical Education to provide continuing medical education for physicians.

Case Western Reserve University School of Medicine designates this live activity for a maximum of 11 *AMA PRA Category 1 Credits™*. Physicians should claim only the credit commensurate with the extent of their participation in the activity.



REGISTER ONLINE

Physician | \$325

Cleveland Society of Rheumatology member and UH Alumni | \$225

Allied Health Professional | \$175

Resident/Fellow | Free Complimentary with letter from Program Director documenting residency status.

International | Complimentary

Corporate | \$500

* After April 1st, prices increase \$50

Visit <https://cwru.cloud-cme.com/UHWELLNESS26> with your credit card, through February 28.

PROGRAM AGENDA DAY 1

FRIDAY, MAY 1, 2026

7 – 8 a.m.

Registration, Exhibits and
Continental Breakfast

8 – 8:05 a.m.

Welcome and Introduction

Marina Magrey, MD and Vicky Nahra, MD

SESSION I | NOVEL TREATMENTS IN RHEUMATIC DISEASES

Moderators: Donald Anthony, MD and
Lenche Kostadinova, MD

8:05 – 8:40 a.m.

Keynote | Novel Treatments for Scleroderma
Including Car-T Cells

Dinesh Khanna, MBBS, Msc

8:40 – 9:15 a.m.

GLP1s and What Rheumatologists Should
Know About?

Philip J. Mease, MD

9:15 – 9:50 a.m.

Rheumatoid Arthritis Treatment Updates

Jack Cush, MD

9:50 – 10:10 a.m.

Questions and Answer Session

10:10 – 10:30 a.m. | Break

Moderators: Van Warren, MD and
Maria Antonelli, MD

10:30 – 11:05 a.m.

CTD-ILD New Treatment

Jon T. Giles, MD, MPH

11:05 – 11:40 a.m.

Emerging Therapies in Lupus

George Tsokos, MD

11:40 a.m. – 12:00 p.m.

Question & Answer Session

12:00 – 1 p.m. | Lunch & Learn

Product Theaters:

Session 1 | Room 134

Session 2 | Room 150

SESSION II | RECENT ADVANCES IN CHALLENGING RHEUMATIC CONDITIONS

Moderators: Kinanah Yaseen, MD and
Elisabeth Roter, MD

1 – 1:35 p.m.

Update on the Treatment of ANCA-
Associated Vasculitis

Carol Langford, MD, MHS

1:35 – 2:10 p.m.

Difficult to Treat Spondyloarthritis

Marina Magrey, MD

2:10 – 2:45 p.m.

Derm Manifestations of Rheumatic Diseases

Bethany Rohr, MD

2:45 – 3 p.m. | Questions & Answer Session

3 – 3:15 p.m. | Break & Exhibits

Moderators: Ogechi Muoh, MD* and
Krista Topalsky, MD

3:15 – 3:50 p.m.

Osteoporosis Update

Sarah Keller, DO

3:50 – 4:50 p.m.

Case Discussions | Rheumatology Fellows

Vicky Nahra, Ansaam Daoud, MD*, Lenche
Kostadinova, MD*

4:50 – 5:10 p.m. | Question & Answer Session

5:10 – 5:15 p.m. | Closing Remarks

5:15 – 6:15 p.m.

Evening Reception and Product Theater

Product Theaters:

Session 3 | Room 134

PROGRAM AGENDA DAY 2

SATURDAY, MAY 2, 2026

7 – 8 a.m.

Registration, Exhibits and
Continental Breakfast

8 – 8:05 a.m.

Welcome and Introduction

Marina Magrey, MD and Vicky Nahra, MD

SESSION III | AXIAL DISEASES AND PSORIATIC ARTHRITIS

Moderators: Marwa Sabha, MD and
Nora Singer, MD

8:05 – 8:40 a.m.

Psoriatic Arthritis New Treatments

M. Elaine Husni, MD, MPH

8:40 – 9:15 a.m.

Axial Spondylarthritis New Treatment

Denis Poddubnyy, MD

9:15 – 9:50 a.m.

Uveitis

Shree Kurup, MD

9:50 – 10:10 a.m.

Questions & Answer Session

10:10 – 10:30 a.m. | Break & Exhibits

SESSION IV | MSK/ULTRASOUND

Moderators: Lauren Mathias, MD and Lawrence
Kent, MD

10:30 – 11:10 a.m.

Use of MSK Ultrasound in PsA

Sibel Aydin, MD

11:10 – 11:50 a.m.

MSK Ultrasound Overview

Haseeb Chaudhary, MD

11:50 – 12:30 a.m.

US Use in SS, GCA

Minna Kohler, MD

12:30 a.m. – 12:35 p.m. | Closing Remarks

SPEAKERS

KEYNOTE SPEAKER

Dinesh Khanna, MBBS, Msc

Professor of Internal Medicine

University of Michigan Medical School

Sibel Aydin, MD

Associate Scientist, Inflammation and Chronic Disease

Ottawa Hospital Research Institute

Professor, Faculty of Medicine, Division of Rheumatology

University of Ottawa

Haseeb Chaudhary, MD

Division of Rheumatology

UH Cleveland Medical Center

Assistant Professor, Case Western Reserve University

School of Medicine

Jack Cush, MD

Executive Editor of RheumNow.com

Jon T. Giles, MD, MPH

Director, Inflammatory Arthritis Clinical Center

Cedars-Sinai Medical Center

M. Elaine Husni, MD, MPH

Vice Chair, Dept of Rheumatic and Immunologic Diseases

Cleveland Clinic

Sarah Keller, DO

Division of Rheumatology

UH Cleveland Medical Center

Associate Professor, Case Western Reserve University

School of Medicine

Minna Kohler, MD

Director, Rheumatology Musculoskeletal Ultrasound Program

Massachusetts General Hospital, Harvard Medical School

Shree Kurup, MD

Director of the Division of Vitreoretinal Diseases,

Surgery and Ocular Immunology and Uveitis

UH Cleveland Medical Center

Professor, Case Western Reserve University

School of Medicine

Carol Langford, MD, MHS

Director, Center for Vasculitis Care and Research

Cleveland Clinic

Marina Magrey, MD

Division Chief, Rheumatology

UH Cleveland Medical Center

Professor, Case Western Reserve University

School of Medicine

Philip J. Mease, MD

Director of Rheumatology Research

Swedish Medical Center/Providence-St. Joseph Health

Clinical Professor, University of Washington

School of Medicine, Seattle, WA

Vicky Nahra, MD

Division of Rheumatology

UH Cleveland Medical Center Assistant

Professor, Case Western Reserve University

School of Medicine

Denis Poddubnyy, MD

Division of Rheumatology, Department of Medicine

Professor of Medicine

Temerty Faculty of Medicine

University of Toronto

Senior Scientist

Director of Advanced Imaging Studies for

Rheumatic Diseases Program

Co-director of Gladman-Krembil Psoriatic Arthritis Program,

Schroeder Arthritis Institute

Kemil Research Institute

University Health Network

Bethany Rohr, MD

Dermatology, UH Cleveland Medical Center

Associate Professor, Case Western Reserve University

School of Medicine

Elisabeth Roter, MD

Division of Rheumatology, UH Cleveland Medical Center

Assistant Professor, Case Western Reserve University

School of Medicine

Marwa Sabha, MD

Division of Rheumatology

UH Cleveland Medical Center

George Tsokos, MD

Chief of Rheumatology and Clinical Immunology,

Beth Israel Deaconess Medical Center

Professor of Medicine, Harvard Medical School

Van Warren, MD

Division of Rheumatology, UH Cleveland Medical Center

Assistant Professor, Case Western Reserve University

School of Medicine